

The Edmond Memorial High School Orchestra
2018-2019 Orchestra Placement Auditions

If interested in auditioning for the 2019-2020 Edmond Memorial Symphonic or Philharmonic Orchestra,
Mr. Koehn, EMHS Orchestra director
Office) 726-5542 email) david.koehn@edmondschools.net

Audition Procedure:

1. Students will submit a recording to include all of the listed material in the order it appears on this sheet. Recordings should be of the highest quality (not your chrome book microphone), and your director can assist you with this process.
2. Recordings can be turned in both at bulldogorch.com or via canvas in an open assignment. After submitting your recording it will be assigned a number so please NO OTHER IDENTIFYING MARKS including any speaking or other audible cues on the actual recording.
3. Recordings are due by the end of school on Friday, May 17, 2019. Results will be posted by the end of school on Thursday, May 23, 2019 (or last day of class).
4. Orchestra placement is dependent upon playing ability, availability of the class into the student's school schedule, maturity to manage the course work, and balance within the orchestra.
5. Adjudicated factors will include but are not limited to the following areas: pitch and rhythm accuracy, bow control, tone production, and musicianship (use of phrasing, dynamics, and style).

Audition Material (to be performed in this order):

1. Three-octave scales (double bass will play on two octaves), slur two notes, performed straight up and down without repeating the top note, quarter note equals 90 beats per minute.
 - a. Violin: A Major
 - b. Viola: D Major
 - c. Cello: D Major
 - d. Bass: TWO OCTAVES ONLY: A-flat Major
2. Musical excerpts (tempos as marked). It is STRONGLY recommended that published fingerings in the etude and excerpt be followed. If a decision has to be made in the event of a tie, it will be in your best interest to use the written fingerings. Bowing, tempo, and style markings must be followed.

Quarter Note = 80

retain

retain

Quarter Note = 72

mf

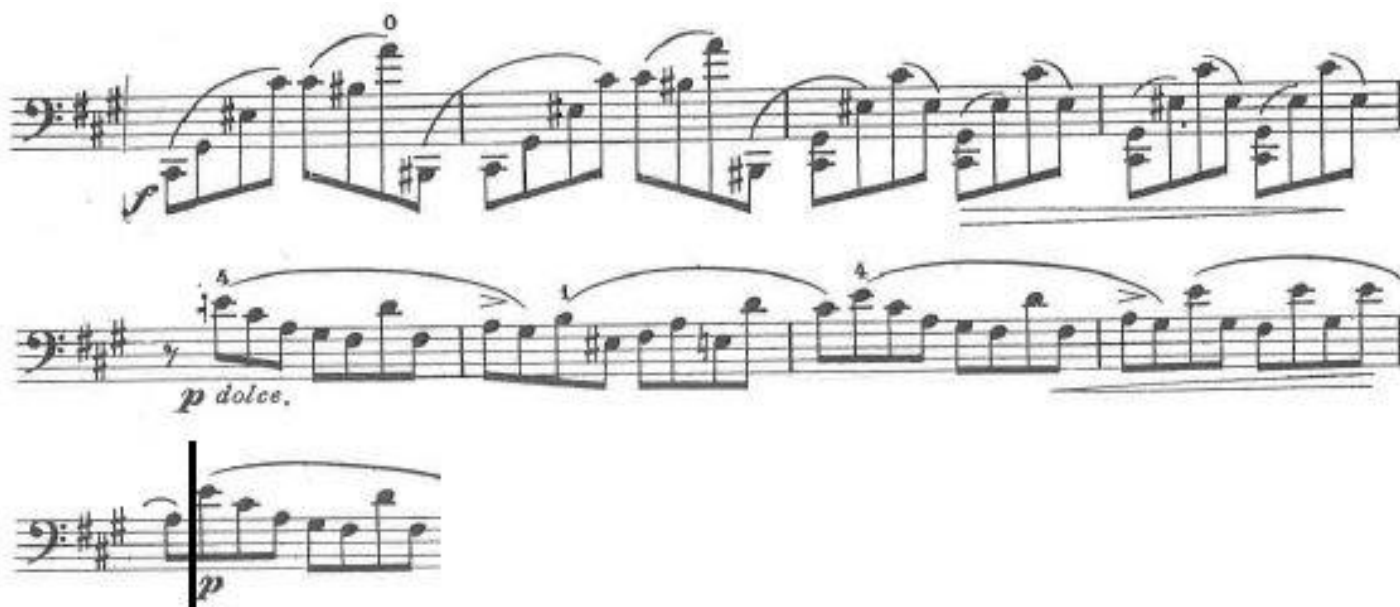
Quarter Note = 80



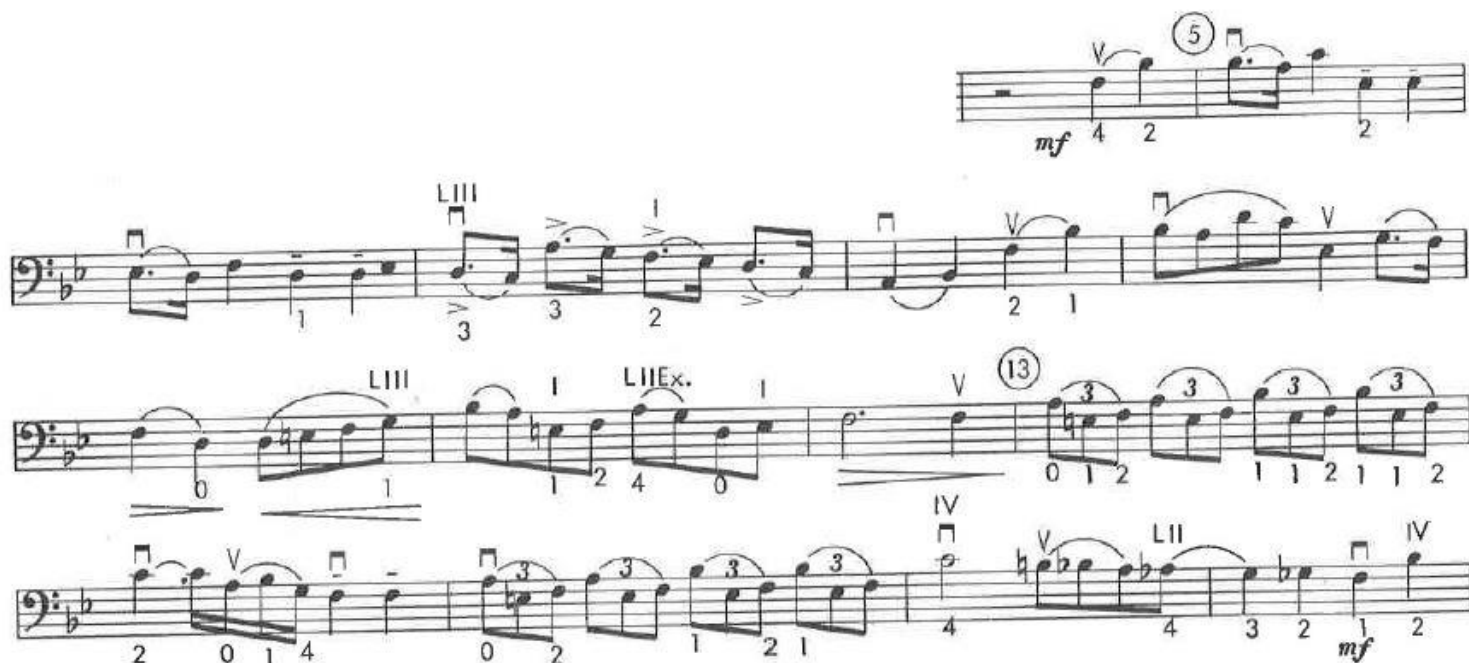
Quarter Note = 72



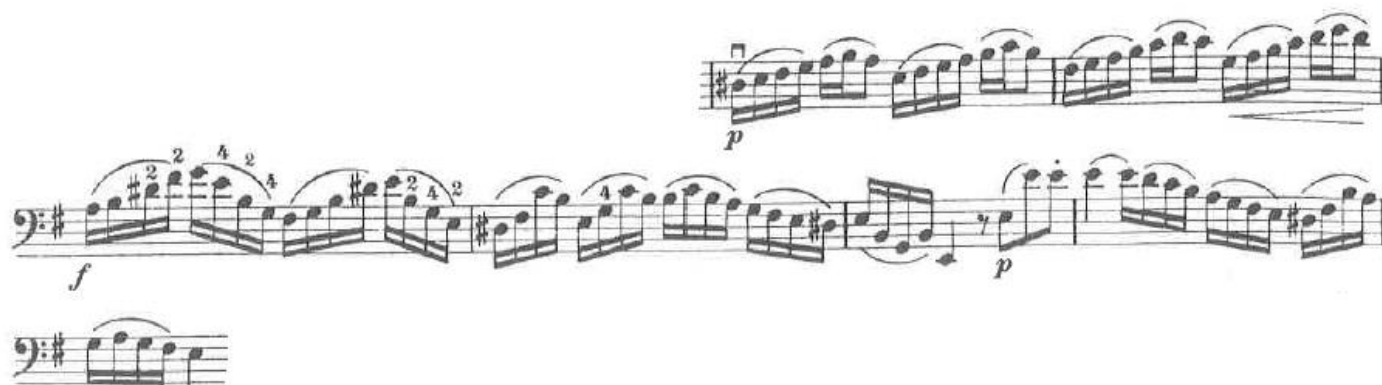
Quarter Note = 100



Quarter Note = 72



Quarter Note = 70



Quarter Note = 72

Four staves of music in B-flat major (two flats). The score includes various musical notations such as slurs, accents, and fingerings. Specific markings include:

- Staff 1: *mf* 2, 4, 1, L II, H.P.
- Staff 2: 4 2, 0, 0, 2, L III, V, L II, 4 .1
- Staff 3: 0, 0 1 0, 1 0, (13), 1 1 2 3 3 3
- Staff 4: L II, 4 1 0, 3 3 3 3, L II, V, H.P., 4 4 1 4 *mf* 2